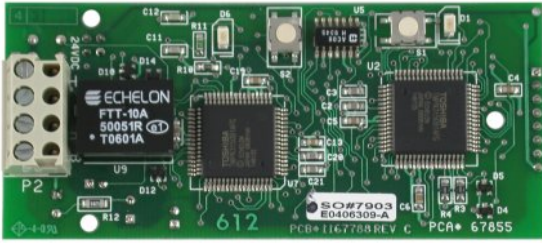
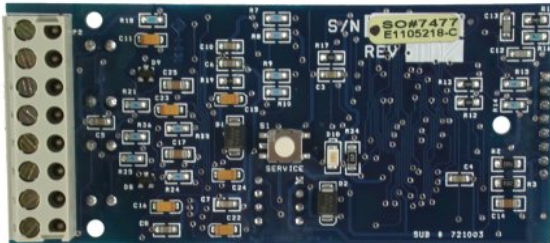


2000 SERIES OPTIONS



NIN **PART NO. 1220810**

The NIN Is The Network Interface Node. It Is Used To Connect Any External Nodes To A 2000 Series Controller. Includes Three Standoffs For Mounting.



35L **PART NO. 1109657**

The 35L Option Card Provides Two Channels Of 4-20 Ma Output From A 2000 Series Controller. Includes Three Standoffs For Mounting. Board Color May Vary.



RS2L **PART NO. 1109658**

The RS2L Option Card Provides An RS232 Communications Output For Direct Connect To A Computer Or To A Modem. This Option Card Comes With A 9-Pin DCE Connector, A 25-Pin DTE Connector, A 25 Ft Phone Cable, And The LRWS Software Package. Includes Three Standoffs For Mounting.



2KIN-V1 **PART NO. 1235230**

The 2KIN-V1 Option Card Allows A 2000 Series Controller To Be Attached To A Lonworks Twisted Pair Network Using FTT 10. It Is One-Way Communications To The Controller. Includes Three Standoffs For Mounting.



NCON
PART NO. 1168513

The Node, Conductivity (NCON) Is A Single Channel Of Conductivity Input To A 2000 Series Controller. A Maximum Of Four NCON Options Can Be Used. A Conductivity Sensor Must Be Ordered Separately. The NIN Option Card Is Required For Operation.



NPH
PART NO. 1104522

The Node Ph (Nph) Is A Single Channel Of Ph Or ORP Input To A 2000 Series Controller. A Maximum Of Four Nph Options Can Be Used. A Ph Or ORP Sensor Must Be Ordered Separately. The NIN Option Card Is Required For Operation.



NDIG
PART NO. 1165667

The Node, Digital Input (NDIG) Is Four Channels Of Digital Input To A 2000 Series Controller. The First Two Channels Can Be Used As Additional Water Meter Inputs. This Node Can Be Used For Drum Switch Inputs. A Maximum Of Two NDIG Options Can Be Used For A Total Of Eight Digital Inputs. The NIN Option Card Is Required For Operation.



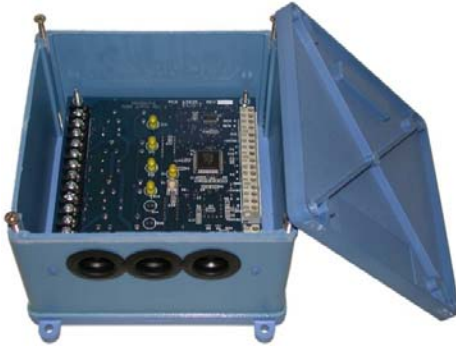
N420I
PART NO. 1169706

The Node, 4-20 Ma Input (N420I) Is Four Channels Of 4-20 Ma Input To A 2000 Series Controller. A Maximum Of Two N420I Options Can Be Used For A Total Of 8 Channels Of 4-20 Ma Input. The NIN Option Card Is Required For Operation.



**NRLY W/RECEPTACLES
PART NO. 1107389**

The Node, Relay (NRLY) Is Four Relay Outputs From A 2000 Series Controller With A Power Cord And Receptacles. The Relays Are Pre-Wired For 120 Vac Output. The NRLY Can Also Be Ordered With Conduit Connections And Dry Contacts. A Maximum Of Two NRLY Options Can Be Used. The NIN Option Card Is Required For Operation.



**NRLY W/CONDUIT CONNECTIONS
PART NO. 1169037**

The Node, Relay (NRLY) Is Four Relay Outputs From A 2000 Series Controller With Conduit Connections. The Relays Are Dry Contacts. The NRLY Can Also Be Ordered Pre-Wired With A Power Cord And Receptacles. A Maximum Of Two NRLY Options Can Be Used. The NIN Option Card Is Required For Operation.



**NCKT
PART NO. 1169439**

The Node, Conductivity Kit (NCKT) Is A Four-Electrode Conductivity Sensor, A 3/4 Inch Solvent-Weld Plumbing Assembly, And An NCON With A NEMA 4X Enclosure.



**PS
PART NO. 1107251**

The Power Supply (PS) Is Used To Provide The +24 Vdc To The 2000 Series Add-On Nodes Such As The NCON, NRLY, Nph, Or NDIG. A PS Is Required If More Than Two Nodes Are Attached To A 2000 Series Controller.



**MD4X
PART NO. 1169193**

The Md4x Is A Modem In A Nema4x Enclosure. It Includes A Power Wiring, A Modem, And A Phone Cable.

**MD
PART NO. 1167740**

Stand Alone Modem.



**CABLE AND CONNECTORS KIT
PART NO. 1169333**

The Phone Cable And Connectors Kit Includes The Phone Cable (Part No. 1166336) And Both The 25-Pin Connector (Part No. 1167765) And The 9-Pin Connector (Part No. 1167764) For Use With The RS2L Option Card.



**PHONE CABLE 25 FT.
PART NO. 1166336**

The Phone Cable (Part No. 1166336) Is Used To Connect The RS2L Card To A Modem Using The 25-Pin DTE Connector, Or To A Computer Using The 9-Pin DCE Connector.



**9-PIN DCE CONNECTOR
PART NO. 1167764**

The 9-Pin DCE Connector (Part No. 1167764) Is Used To Connect The RS2L Option Card Directly To The Serial Port On A Computer.



**25-PIN DTE CONNECTOR
PART NO. 1167765**

The 25-Pin DTE Connector (Part No. 1167765) Is Used To Connect The RS2L Option Card To A Modem.

MODEL 2000 SERIES ADD ON OPTIONS

PART NO.	DESCRIPTION
1220810	NIN, Network Interface card for adding relays, sensors and other options
1109657	35L, dual channel 4-20mA output card
1109658	RS2L, RS232 communications option card (requires RTC)
1235230	2KIN-V1, Card to connect controller to Lon based systems or gateways
1168513	NCON, Conductivity Node used for additional conductivity sensors
1104522	NpH, pH and ORP Node used for additional pH/ORP sensors
1165667	NDIG, Four Channel Digital Input Node used for any on/off function
1169706	N420I, Four Channel 4-20 mA input Node used to add 4-20 ma inputs
1107389	NRLY, Relay Node with receptacles and power cord used to add four additional relays to a model 2000 series
1169037	NRLY, Relay Node with conduit connections used to add four additional relays to a model 2000 series
1169439	NCKT, Conductivity Node, sensor and tee prepackaged kit can be conveniently used for make-up conductivity
1107251	PS (+24VDC supply required for 3 or more nodes)
1167979	LRWS, Registered Lakewood Remote Windows Software
1167740	MD, Modem
1169193	MD4X, Modem in NEMA4X enclosure
1169333	Kit, Connectors and Cable
1166336	Cable, phone, 25ft
1167764	Connector, 9 Pin DCE
1167765	Connector, 25 Pin DTE